

WinpowerG2 quick start

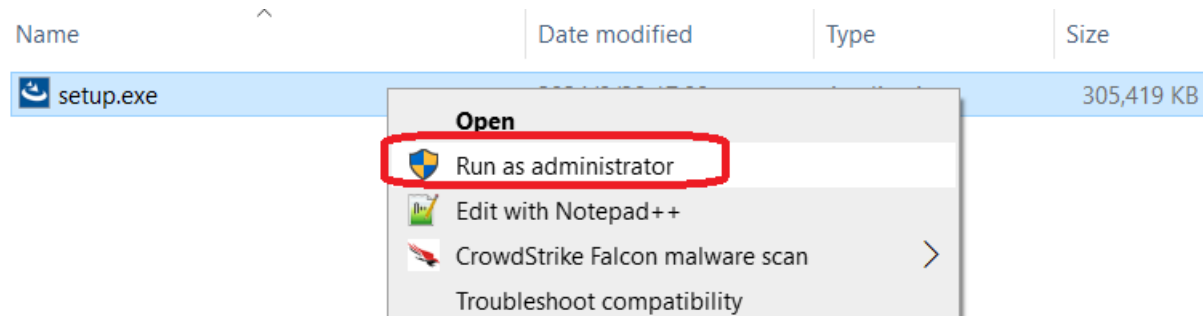
Contents

1.	Windows OS.....	2
1.1	Installation.....	2
1.2	Start/Stop Service.....	4
1.3	Uninstall.....	5
2.	Linux OS	5
2.1	Installation.....	5
2.2	Start/Stop Service.....	9
2.3	Uninstall.....	10
3.	Mac OSX.....	10
3.1	Installation.....	10
3.2	Start/Stop Service.....	13
3.3	Uninstall.....	14
4.	Quickly Start.....	15
4.1	Enable Ports for different service	15
4.2	Add UPS Devices	15
4.3	Local shutdown function.....	18
4.4	Language.....	19
4.5	On-Line help.....	20

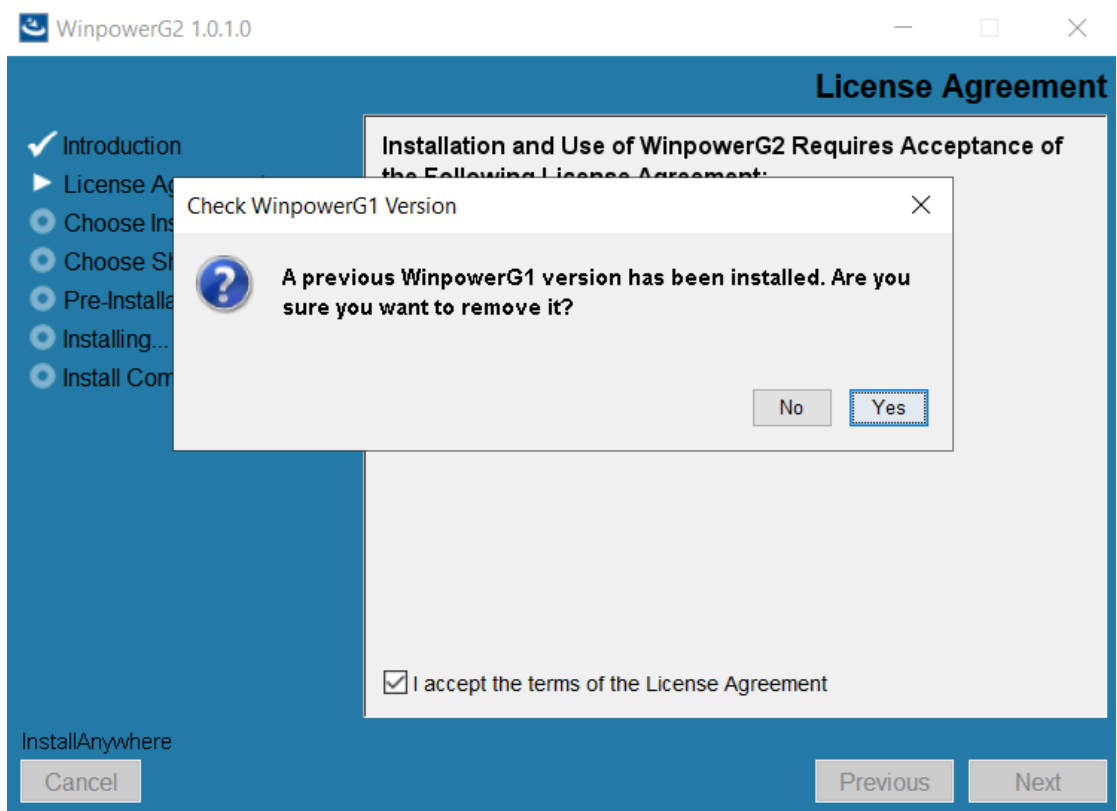
1. Windows OS

1.1 Installation

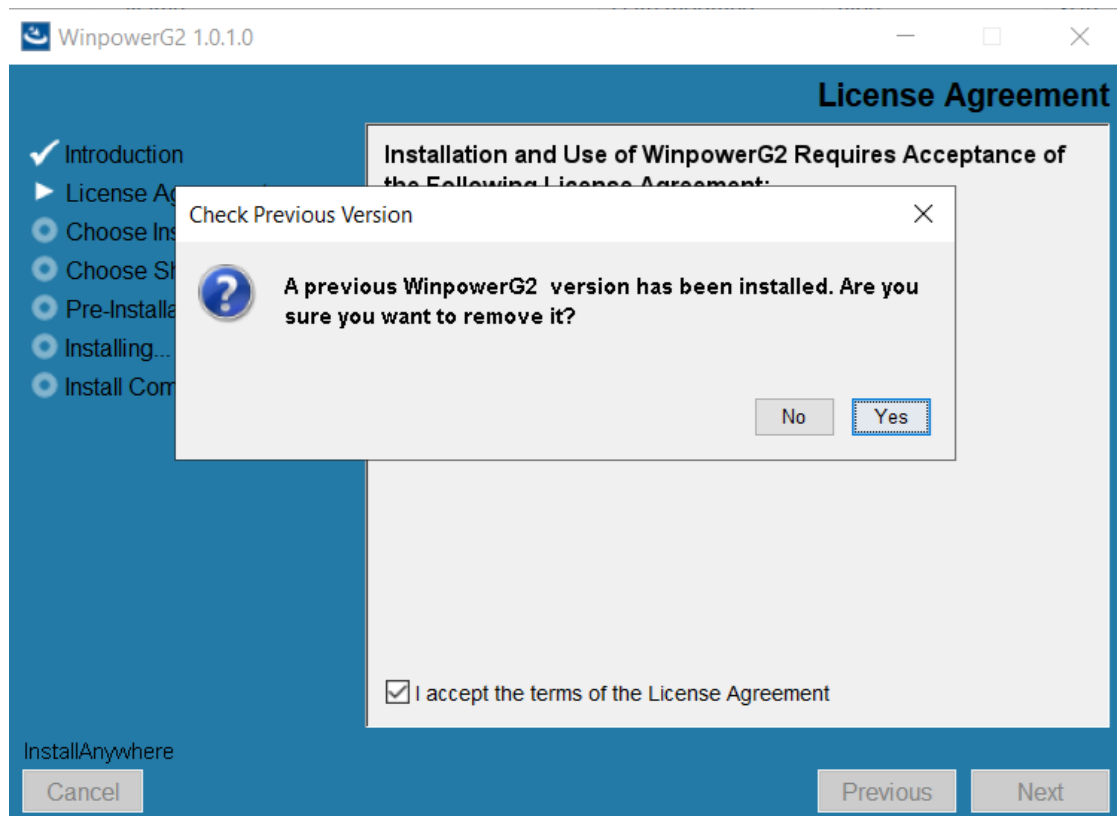
- Extract “WinpowerG2_setup_Windows.zip” installer file.
Right click “setup.exe”, choose “Run as administrator”, install software with administrator privilege.



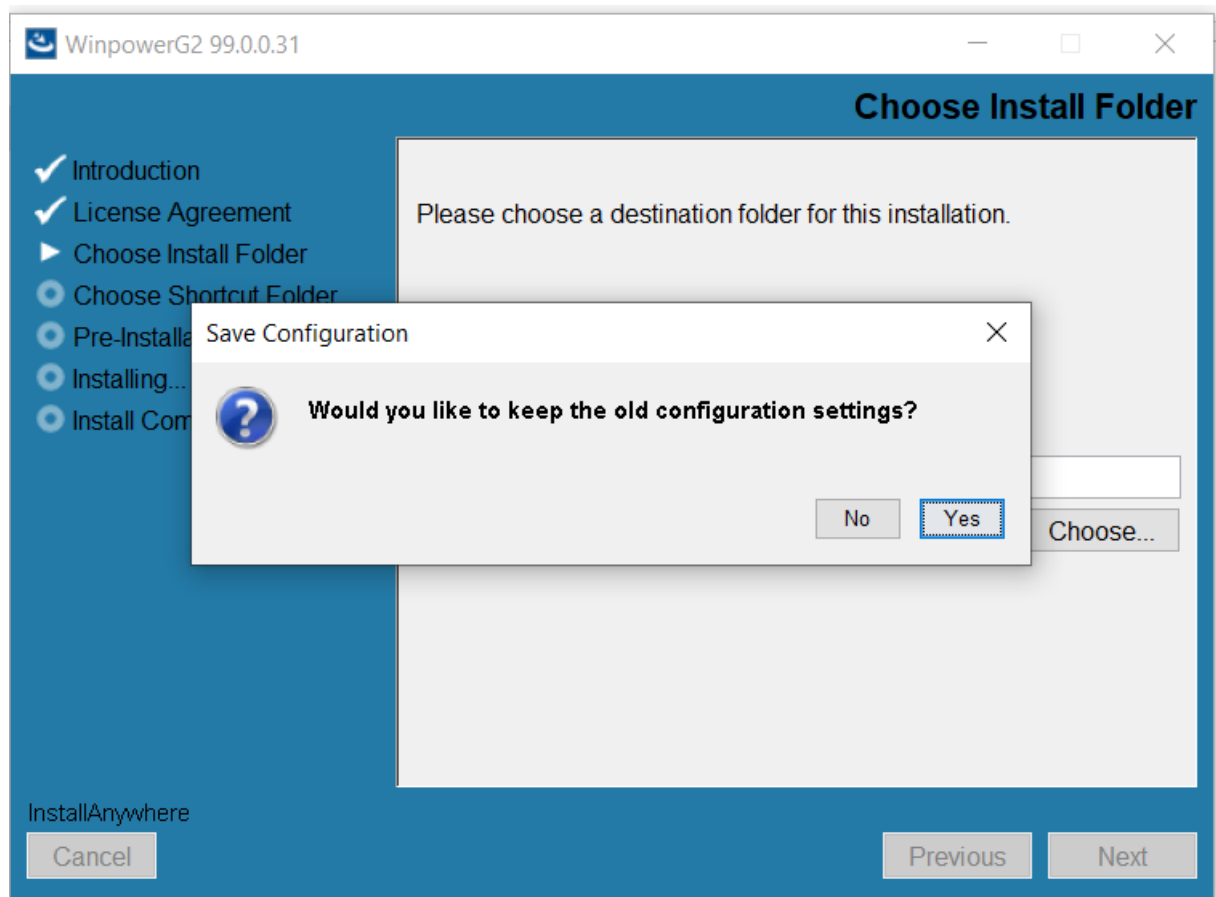
- If a previous WinpowerG1 version is detected on the system, it will prompt "A previous WinpowerG1 has been installed. Are you sure you want to remove it", Click "Yes" to uninstall the old version, click "No" to exit the installation.



- If an older WinpowerG2 version is detected on the system, it will prompt "A previous WinpowerG2 has been installed. Are you sure you want to remove it", Click "Yes" to uninstall the old version, click "No" to exit the installation.

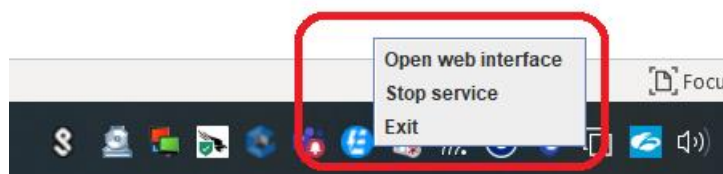


- After selecting "Yes", it will prompt "Would you like to keep the old configuration setting". If you choose "Yes", the old database and configuration will be retained. If you choose "No", all data will be deleted.

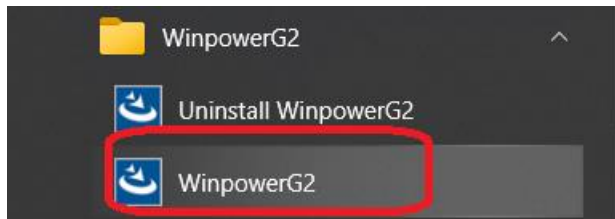


1.2 Start/Stop Service

- After installing Winpower, the service will automatically start, and a tray icon will appear in the bottom of the computer taskbar as shown in the figure below. Right click the tray icon can open the website, stop the service, or exit software completely.
Note: Winpower service will start automatically with the system reboot, while the tray icon will start automatically after the user logging in.

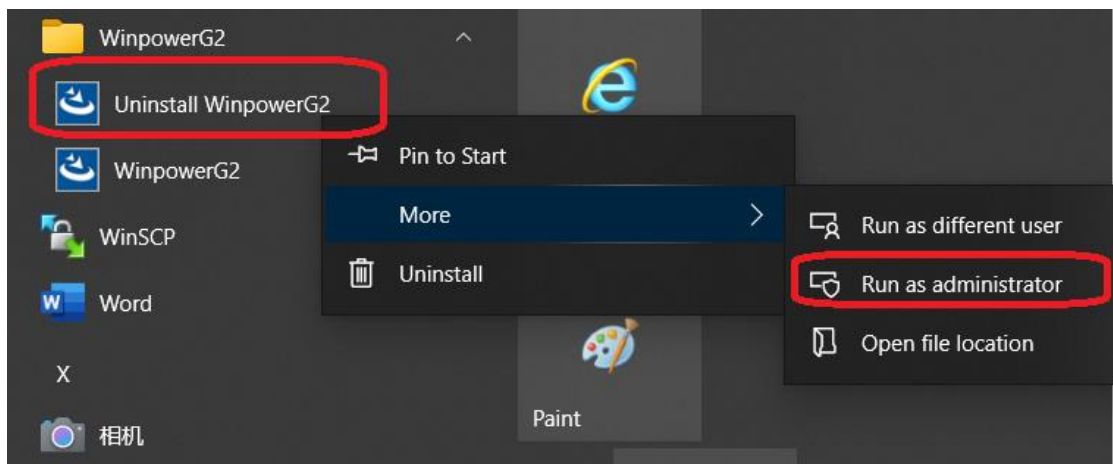


- Starting/stopping services through tray icon usually takes about 30 seconds, with a maximum of 1 minute
- Once exit software, you can restart the tray icon and service via shortcuts from desktop or program menu.



1.3 Uninstall

- Open program menu, choose “Uninstall WinpowerG2”, Click “Run as administrator”, and uninstall software with administrator privileges.

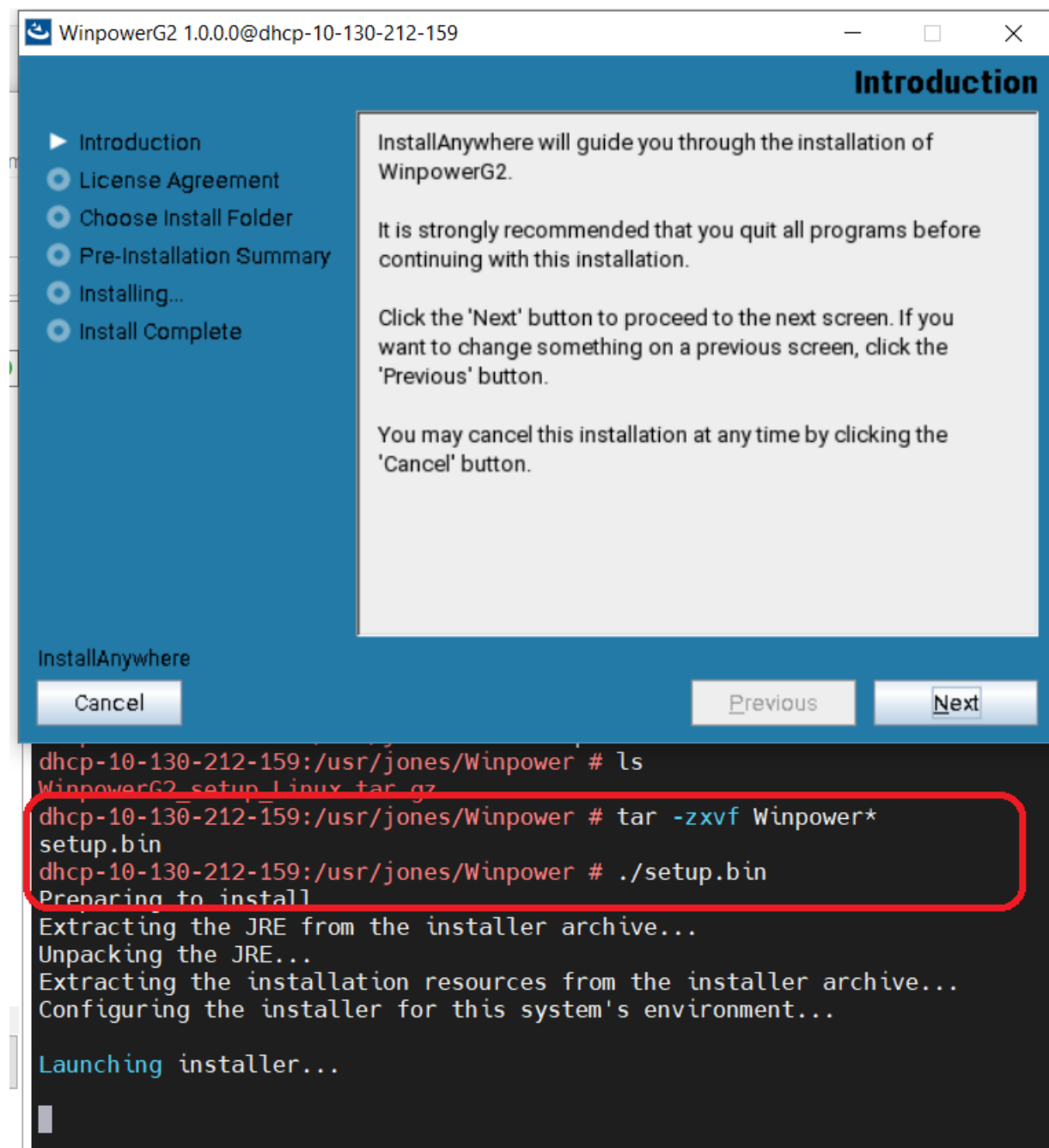


2. Linux OS

2.1 Installation

- On Linux systems, run the command “tar -zxvf Winpower*.tar.gz” to extract installer file.
- If you are root user, run the command “./setup.bin” for installation.
If you are non-root user, run the command “sudo ./setup.bin” for installation.
Software will automatically determine whether the operating system is in graphical mode or text mode. If the operating system is in graphical mode, it supports graphical interface installation. If it is in text mode, a text message will pop up for installation.
Linux does not support the installation method of retaining configuration, so if you

need to retain old configuration, please manually save the configuration file.



➤ If logging into Linux through tools such as Putty or MobaXterm for Winpower installation, it is recommended to use text mode installation directly, because if it is a graphical interface installation, the pop-up dialog may be hidden under the interface of the MobaXterm tool. Input the command `./setup.bin -i console`, follow the text prompts to complete the installation.

```
[root@localhost CTL]# pwd
/usr/jones/WinpowerG2/CTL
[root@localhost CTL]# ./setup.bin -i console
Preparing to install
Extracting the JRE from the installer archive...
Unpacking the JRE...
Extracting the installation resources from the installer archive...
Configuring the installer for this system's environment...

Launching installer...

=====
WinpowerG2                                     (created with InstallAnywhere)
-----


Preparing CONSOLE Mode Installation...

=====
Introduction
-----

InstallAnywhere will guide you through the installation of WinpowerG2.

It is strongly recommended that you quit all programs before continuing with
this installation.

Respond to each prompt to proceed to the next step in the installation.  If
you want to change something on a previous step, type 'back'.
```

 root@localhost:/usr/jones/WinpowerG2

```
-----  
Preparing CONSOLE Mode Installation...
```

```
-----  
Introduction  
-----
```

InstallAnywhere will guide you through the installation of WinpowerG2.

It is strongly recommended that you quit all programs before continuing with this installation.

Respond to each prompt to proceed to the next step in the installation. If you want to change something on a previous step, type 'back'.

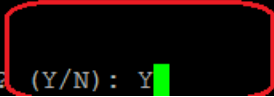
You may cancel this installation at any time by typing 'quit'.

PRESS <ENTER> TO CONTINUE:

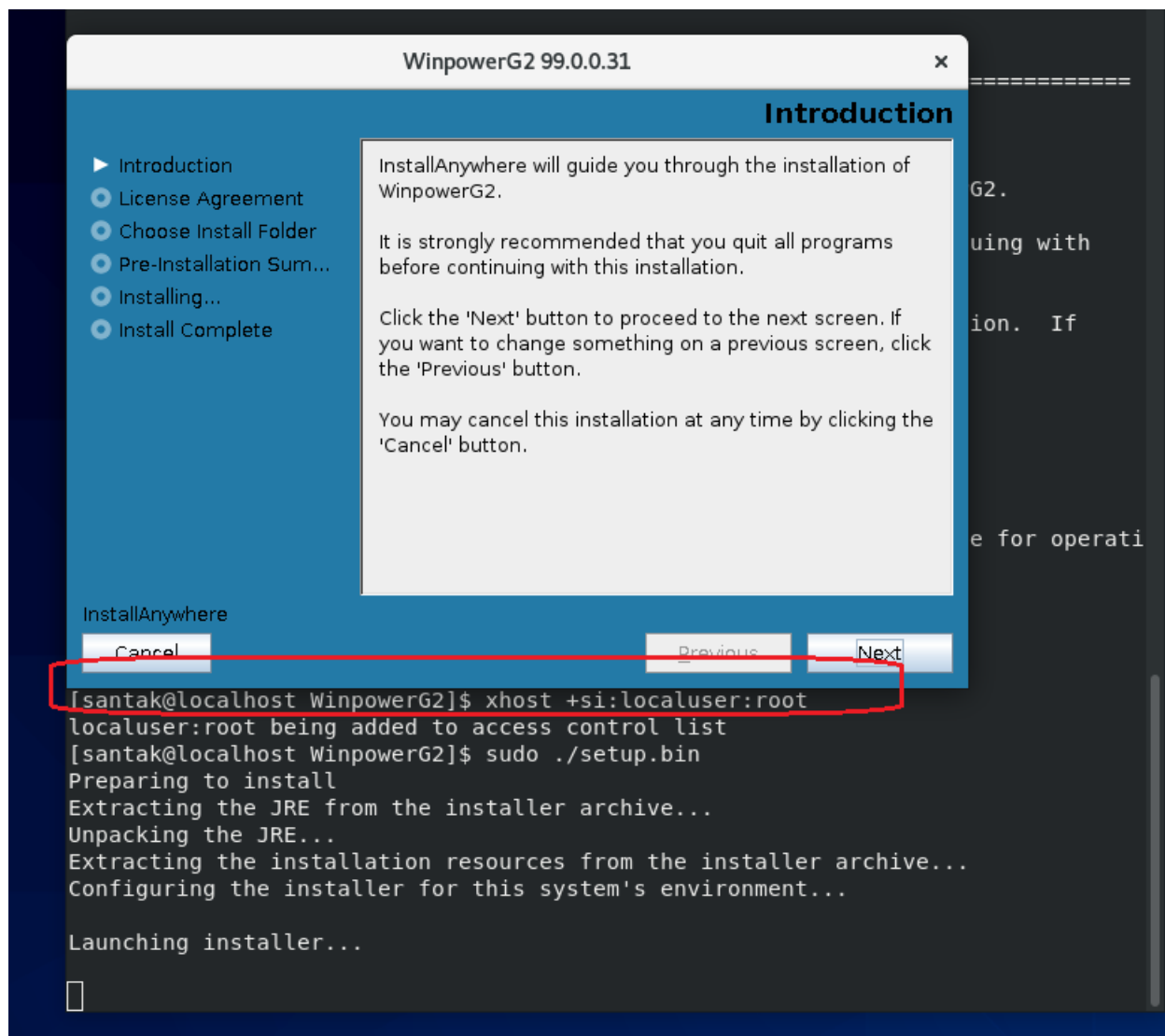
```
-----  
License Agreement  
-----
```

Installation and Use of WinpowerG2 Requires Acceptance of the Following License Agreement:

Need to Complete

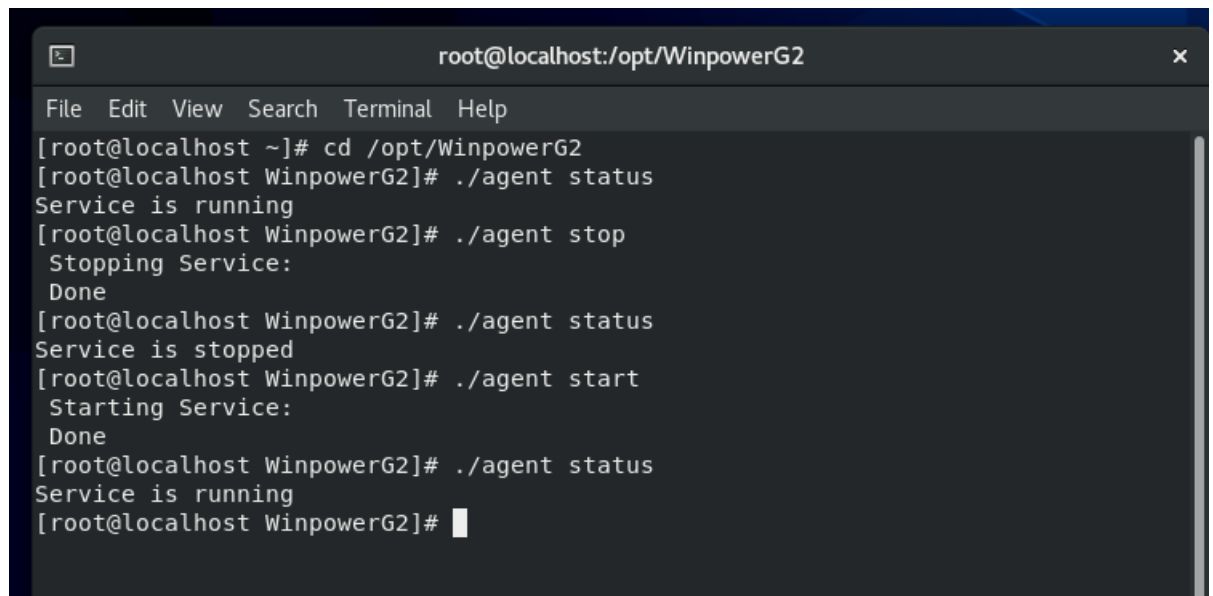
DO YOU ACCEPT THE TERMS OF THIS LICENSE AGREEMENT? (Y/N): Y 

- On some Linux systems, If you need to install in graphical mode for non-root user, please enter the command "xhost +si:localuser:root".



2.2 Start/Stop Service

- Use the following command to start/stop/check the service. Add "sudo" for non-root user.
Enter to installation directory via "cd /opt/WinpowerG2" command.
Check service status: ./agent status
Stop service status: ./agent stop
Start service status: ./agent start

A terminal window titled 'root@localhost:/opt/WinpowerG2' with a menu bar (File, Edit, View, Search, Terminal, Help). The terminal shows the following commands and output:

```
[root@localhost ~]# cd /opt/WinpowerG2
[root@localhost WinpowerG2]# ./agent status
Service is running
[root@localhost WinpowerG2]# ./agent stop
Stopping Service:
Done
[root@localhost WinpowerG2]# ./agent status
Service is stopped
[root@localhost WinpowerG2]# ./agent start
Starting Service:
Done
[root@localhost WinpowerG2]# ./agent status
Service is running
[root@localhost WinpowerG2]#
```

- Winpower service will start automatically with system reboot.
Note: Winpower don't support tray icon for Linux OS
- After service start, you can access to Winpower via web as below:
If you access to Winpower on local host , you can through <https://localhost:8081>. If you access to Winpower via remote just replace "localhost" with the Winpower real IP address.
The default username and password are "admin/admin". Software will require user to modify password for first login.

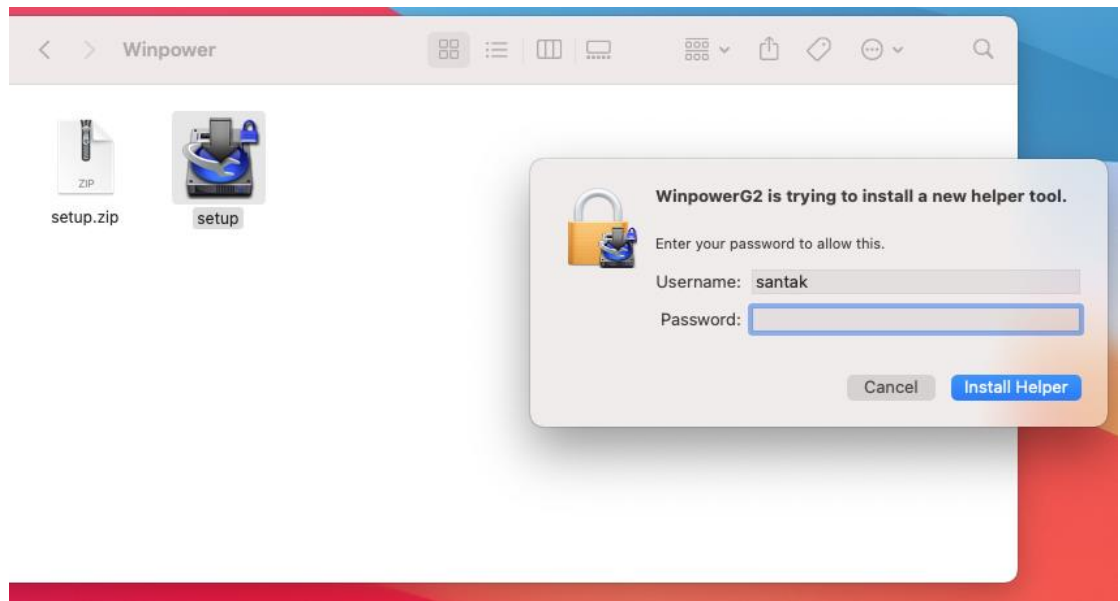
2.3 Uninstall

- Go to the Winpower installation directory and use the command `./Uninstall` to uninstall software. If you are non-root user, use the command `sudo ./Uninstall`.

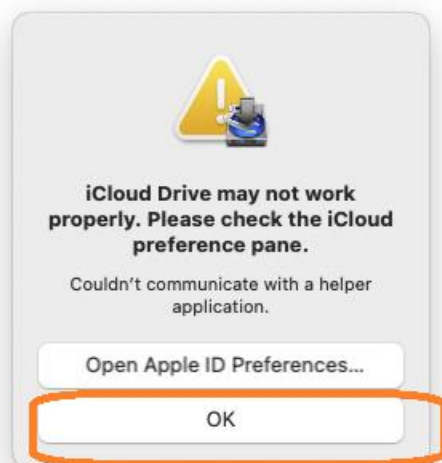
3. Mac OSX

3.1 Installation

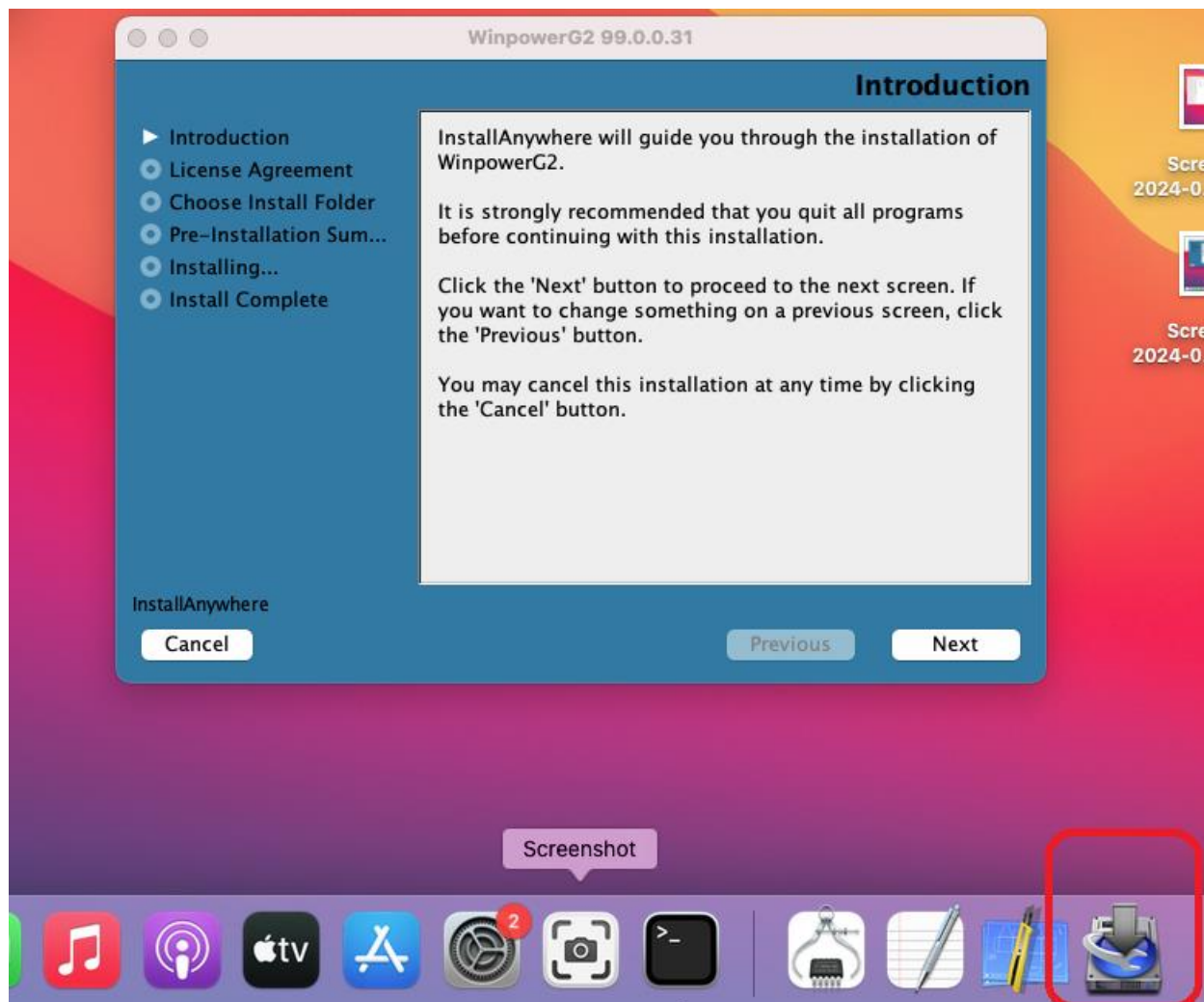
- Double click "WinpowerG2_setup_MacOSX.zip" to extract the file. Double click "setup" and enter the password of current user.
Note: Some Mac OSX do not have "Rosetta" installed by default, so you need to connect your Mac OSX to the internet. Double click "setup", it will prompt you to install "Rosetta". Follow the prompts to complete the installation of "Rosetta" firstly.



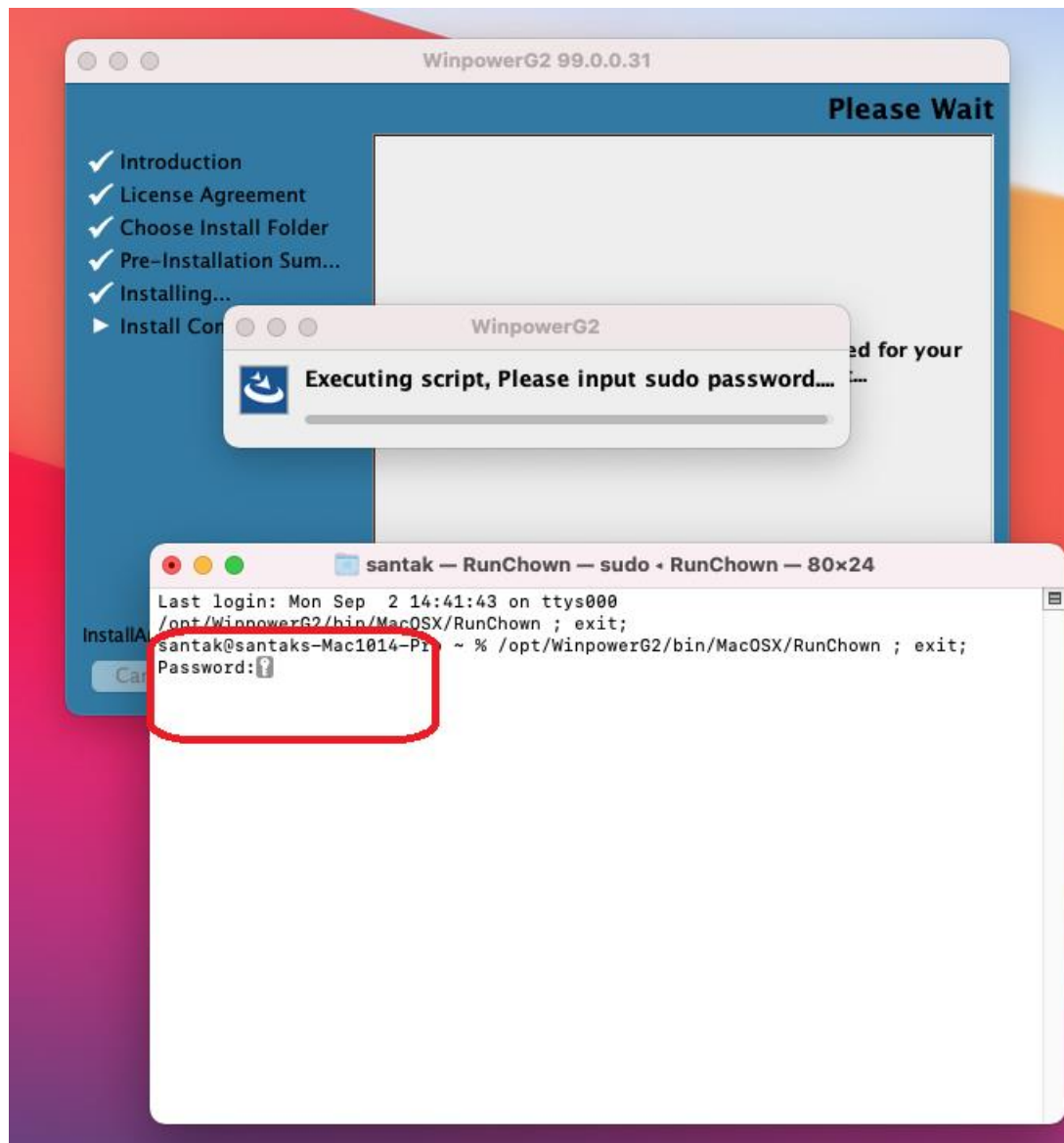
- After entering the password, if following message pops up, please select "OK".



- A small icon will appear on the taskbar as shown in the following image. Wait for several seconds, installation interface will pop up.

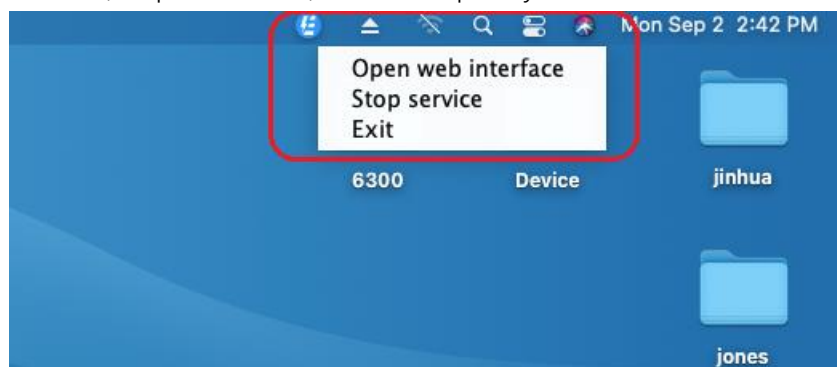


- After installation, it is necessary to execute the script to complete the configuration, so root privilege is required. Please enter the root password.

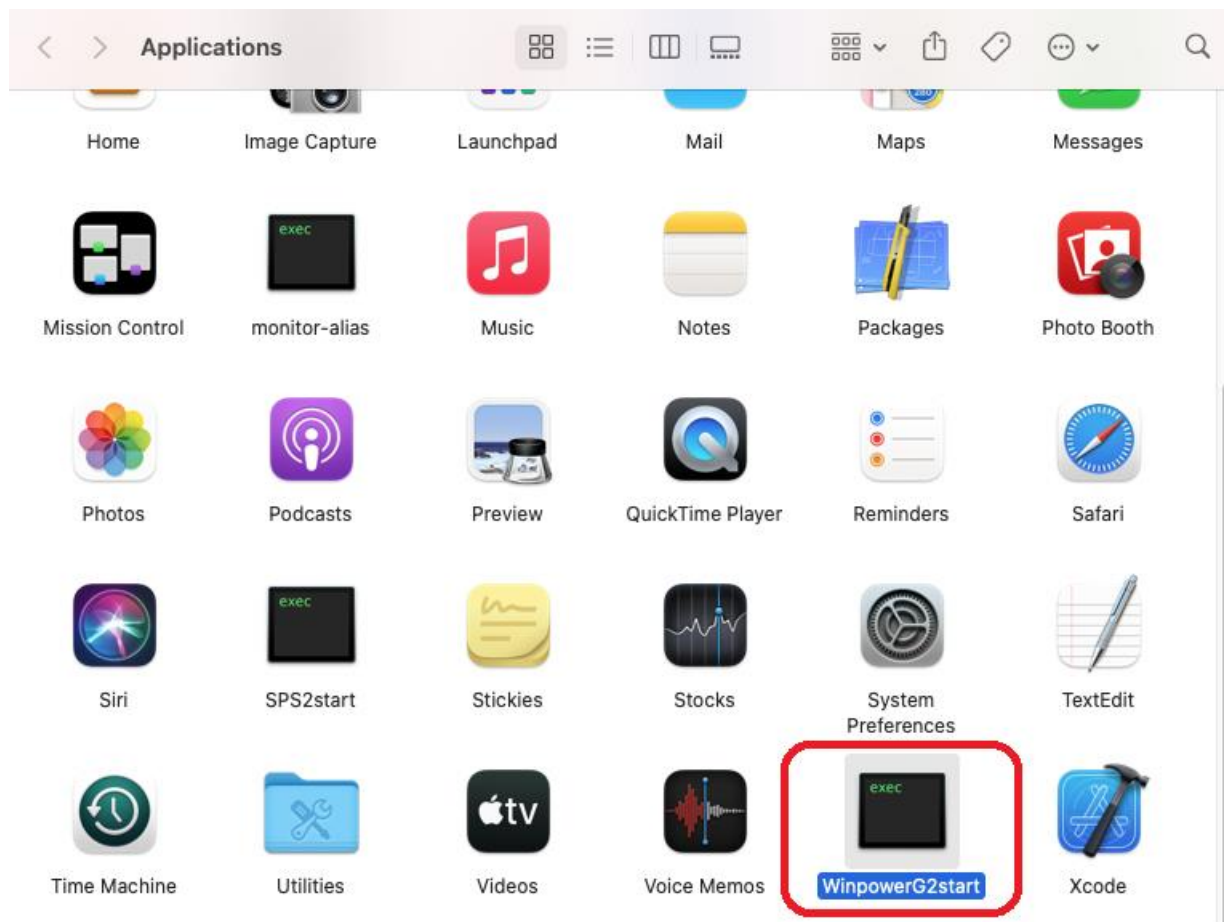


3.2 Start/Stop Service

- After installation, Winpower service and tray icon will automatically start. The tray icon will appear in the upper right corner. Right click the tray icon can open the web, stop the service, or exit completely.



- Once software exited, you can click “WinpowerG2start” under the Applications directory to start the service and tray icon quickly.



- Service can also be stopped/started via commands as following commands.
Enter the installation directory of Winpower: `cd /opt/WinpowerG2`
Check Winpower service: `./agent status`
Stop Winpower service: `./agent stop`
Start the Winpower service: `./agent start`
Start Winpower tray icon: `./agent console`
Exit Winpower: `./agent exit`

- After user logging in, the service and small icon will be started automatically.

3.3 Uninstall

- Go to the installation directory “/opt/WinpowerG2” and enter the command “`sudo ./Uninstall`” to uninstall Winpower.

4. Quickly Start

4.1 Enable Ports for different service

- The ports used by Winpower are as follows:

Https/Http TCP port: 8081

SPS Communication UDP port: 6787, 6788, 6789

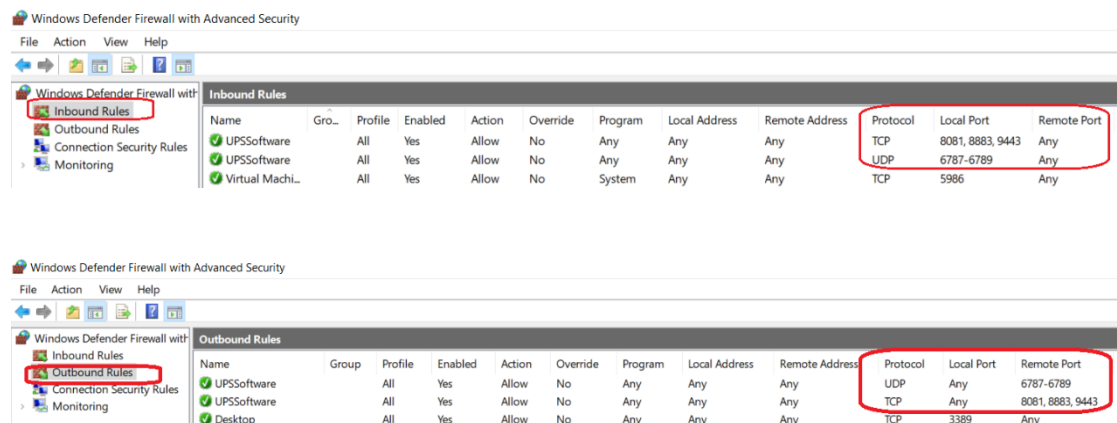
SNMP trap UDP port: 162

SNMP Communication UDP port: 161

IPMI TCP port: 623, 6000 (Once a new IPMI device is added, the port for IPMI device will automatically increase by 1 based on 6000)

MQTT TCP port: 8883

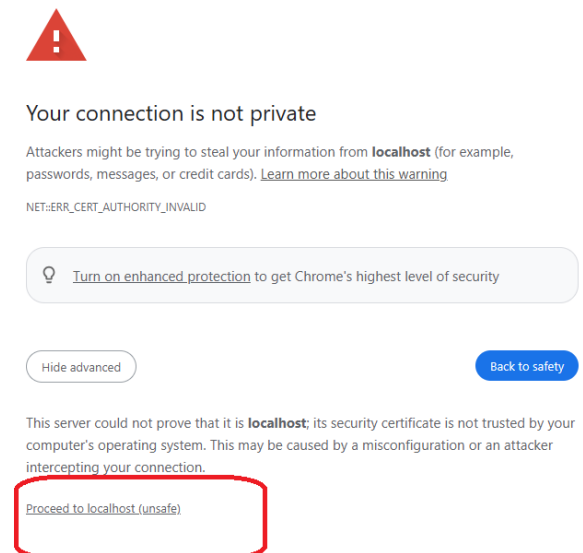
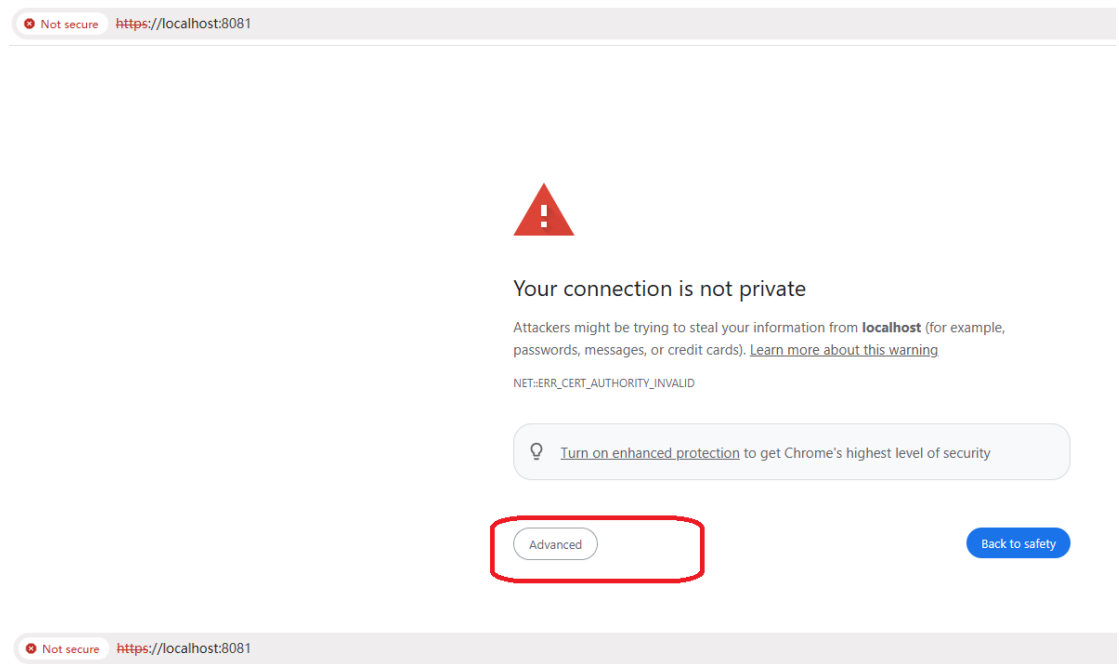
- For Winpower and SPS communication, please open UDP port 6787 6788 6789 and TCP port 8081 8883 9443 for both Winpower host and SPS host. Both “Inbound” and “Outbound” should be opened for the ports. Taking Windows as an example, the port settings are as follows:



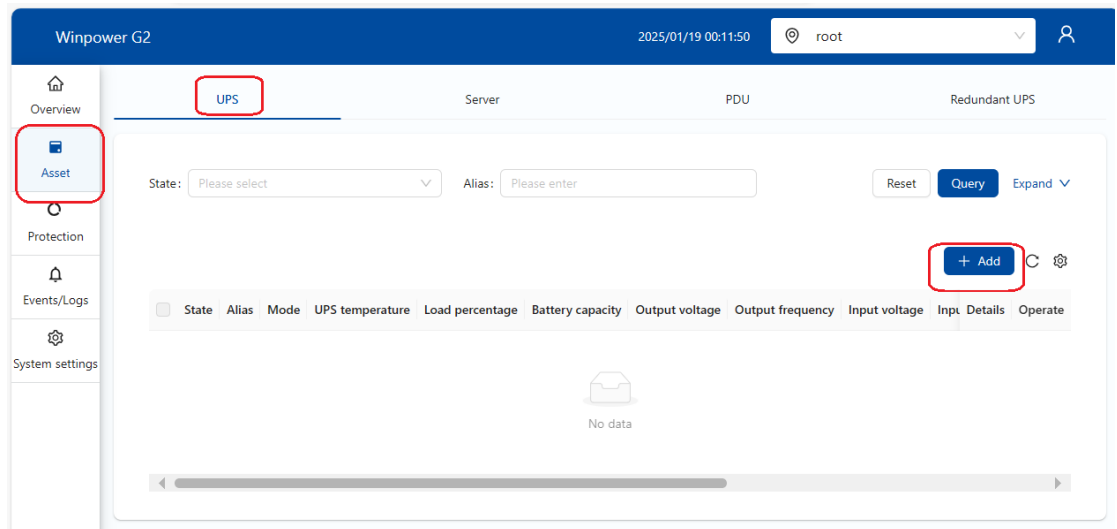
4.2 Add UPS Devices

- If you access to Winpower on local host , you can through <https://localhost:8081>. If you access to Winpower via remote just replace “localhost” with the Winpower real IP address.
The default username and password are “admin/admin”. Software will require user to modify password for first login.

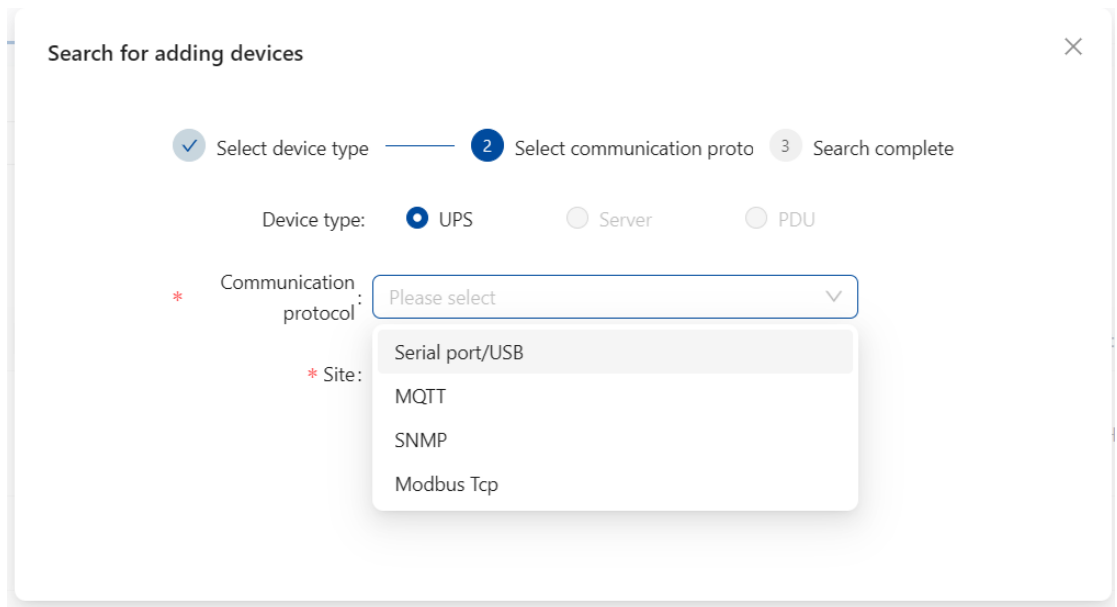
- In order to access the web UI, you will first need to accept the untrusted certificate warning in your browser. This is due to software being factory provisioned with a self-signed certificate and is NOT due to a security issue.



- Click "Asset" -> "UPS" -> "Add", add UPS devices



- You can choose different protocols to add corresponding UPS devices.



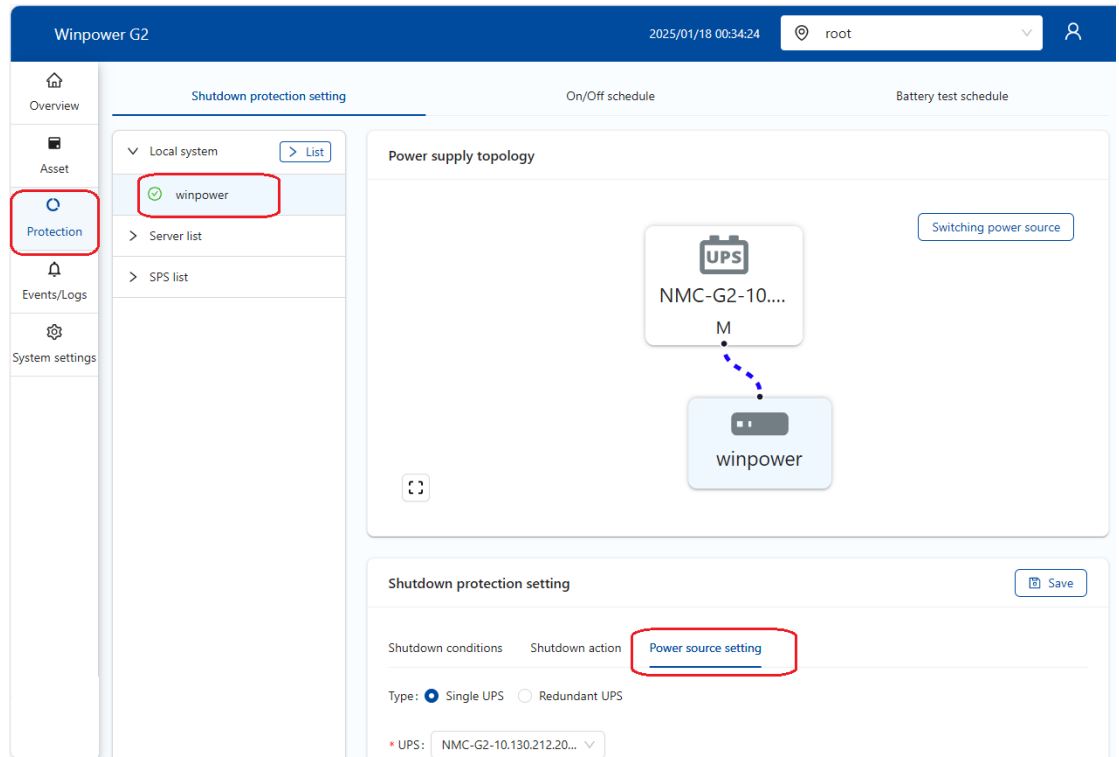
- For Windows system, the software automatically detects all serial ports in the system and does not support add serial ports manually.

For Linux system, the software will list serial port devices such as /dev/ttyS0, /dev/ttyS1, /dev/ttyUSB0, /dev/ttyUSB1 by default and supports manual addition or deletion of serial ports. The default serial port name of the USB to serial port device in the Linux system is /dev/ttyUSB0 or /dev/ttyUSB1.

For MacOS system, the software does not add a default serial port. If a USB to serial port device is used, it needs to be added or deleted manually.

4.3 Local shutdown function

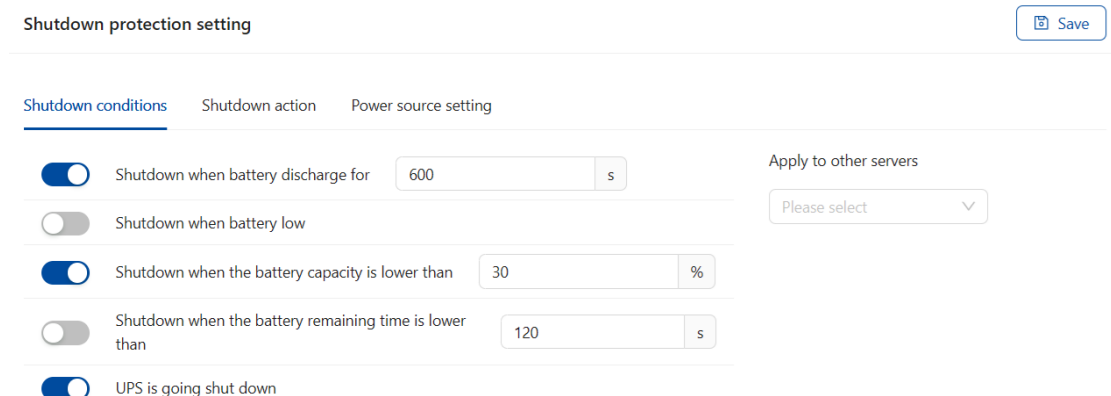
- Click “Protection”->“Local System”->“winpower”->“Power source setting”. Select the corresponding UPS as the power source and click Save button.



- Click “Shutdown conditions”, Set the shutdown trigger conditions and save.
As shown in the figure below, set shutdown conditions to “battery discharge for 600 seconds” and “battery capacity is lower than 30%”. Any of condition is met, the shutdown action will be triggered.

“UPS is going shut down” is applicable to the following two situations:

1. If software communicates with the power source through USB/RS232/Modbus TCP, when the scheduled shutdown time is reached, the shutdown action will be triggered.
2. If software communicates with the power source through NMCG2 card, when the UPS enter to shutdown count down, the card will push shutdown notification to software, then software will trigger the shutdown action.



- Click "Shutdown action" to set shutdown protection action.

You can set following actions:

- Execute script before shutdown or hibernation.
- Shut down OS.
- Hibernate OS.
- Shut down UPS.

"Shut down UPS" means "turn off UPS output". It is only applied to the power source that is communicated with software through USB/RS232/Modbus TCP. If the "UPS shutdown" is enabled, once the shutdown condition is met and the script execution has been completed, software will send a shutdown command to UPS with the delay time of "Execution time". If the power source is communicated with software through cards, UPS output will be shut down by card side not by software, so this option will be disabled.

Shutdown protection setting

Shutdown conditions **Shutdown action** Power source setting

☐ Shutdown script Script execution time s

Script execution method ☒ Service ☐ Non service

☒ System shutdown ☒ Shutdown ☐ Hibernate Execution time mins

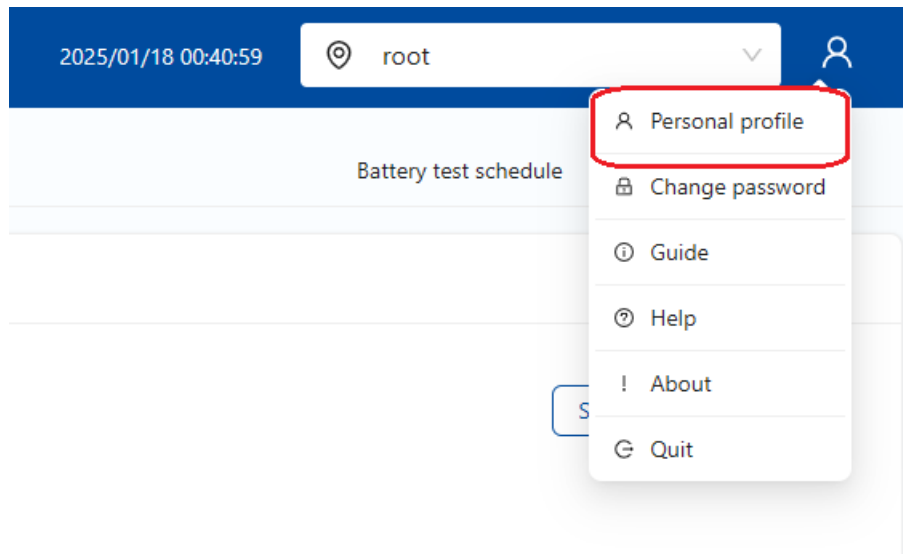
☒ Shut down UPS

- OS shutdown/hibernation commands sending by software.

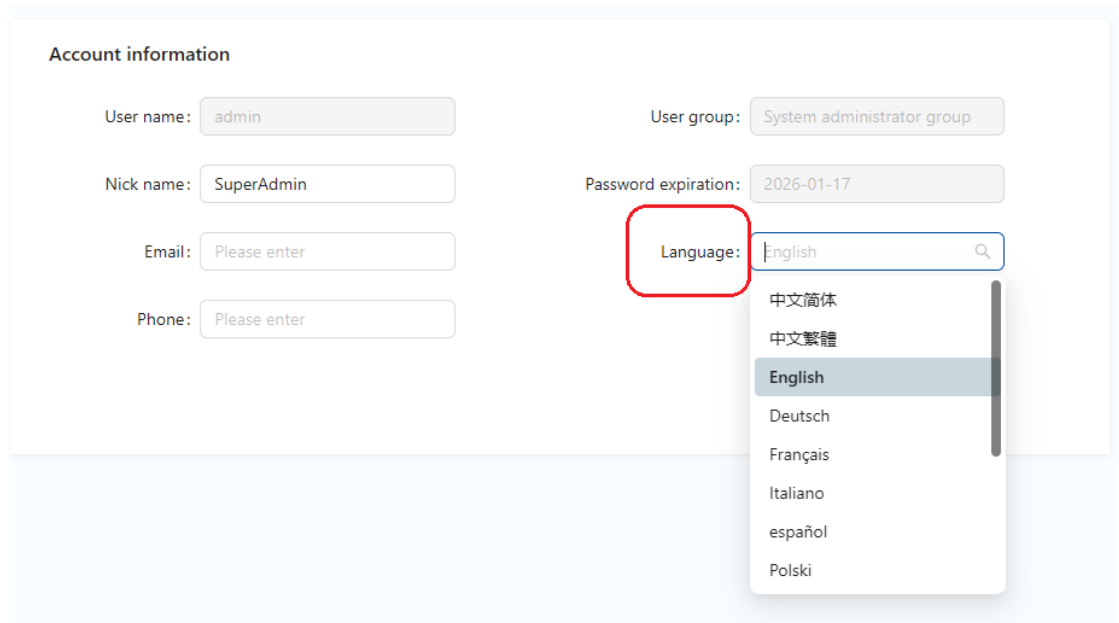
System	Shutdown	Hibernate
Windows	shutdown -s -f	shutdown -h -f If the hibernate is off, turn on it by the command: powercfg /hibernate on
Linux	shutdown -P now	systemctl suspend
Mac OSX	call dll	call dll

4.4 Language

- Click "Personal profile".



- Choose the language.



4.5 On-Line help

- Click "Help", View more usage instructions.

2025/01/18 00:53:36

root



Personal profile

Change password

Guide

Help

About

Quit

Battery test s